



CASK LINE CLEANING OPERATING INSTRUCTIONS

In the event of a blocked line signal check that:

- The coupling is connected to the Beer Pimper ring main
- The drainage pipe is free of kinks
- The beer tap is open
- The sparkler has been removed from the tap
- The gas and assist pump are turned off

PROGRAMME OPTION

Default Clean (10 mins)

One Line Only (7½ mins)

Extended Clean (25 mins)

SELECTION:

Multi tap (One Product)

Single tap (Inc Super Clean*)

NB: Super Clean* does NOT increase programme time. It injects extra chemical and can be used with Multi Tap or Extended programmes

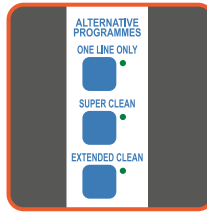
Our customers may obtain **PIPELINE AUTO** beer line cleaning fluid from us at a preferential price.

You can order via our website

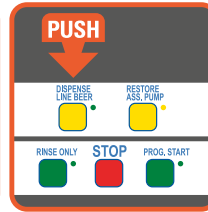
www.beerpimper.co.uk or by calling us on **FREEPHONE 0300 303 2709**



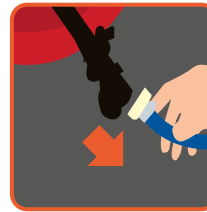
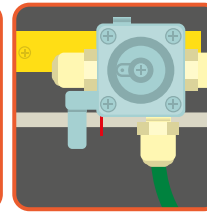
PREP IN THE CELLAR



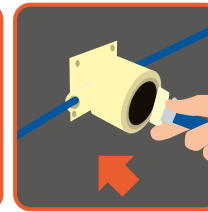
SELECT the cleaning programme required



TURN OFF Gas



REMOVE coupling and any filter washer

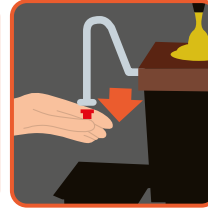


CONNECT coupling to BP Ringmain using plain washer

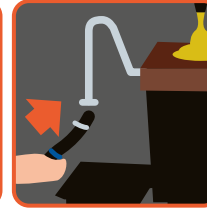
AT THE BAR



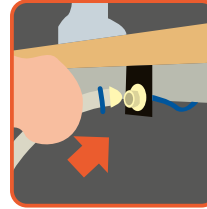
Sell line beer



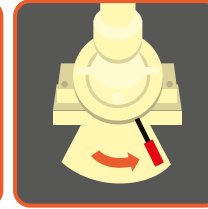
REMOVE sparkler if fitted



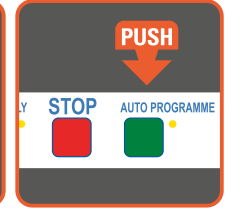
CONNECT Waste to Tap



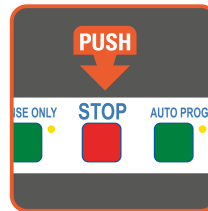
PLUG-IN Waste



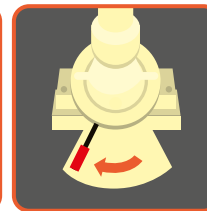
OPEN Check Valve to 'Clean'



Line Clean In Progress

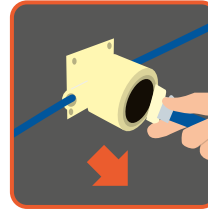
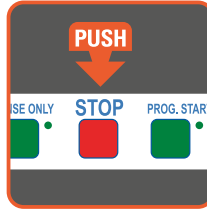


After the beep

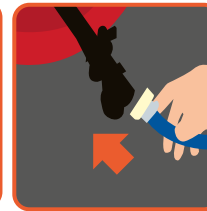


CLOSE Check Valve to 'Normal'

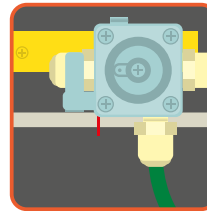
BACK IN THE CELLAR



DISCONNECT from BP Ringmain, store plain washer



RECONNECT coupling with filter washer



TURN ON Gas

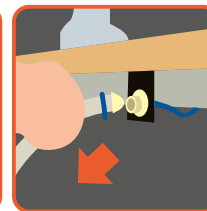
FINISHING UP AT THE BAR



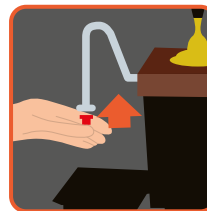
OPEN Tap until beer appears



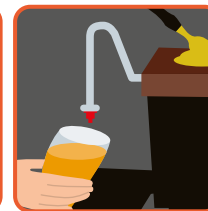
DISCONNECT Waste from Tap



UNPLUG Waste and rinse pipe



REPLACE sparkler



Serve beer

CAUTION!! ALWAYS WEAR PROTECTIVE GLOVES AND GOGGLES WHEN HANDLING BEER LINE CLEANING FLUID



CASK (RINSE ONLY) OPERATING INSTRUCTIONS

In the event of a blocked line signal check that:

- The coupling is connected to the Beer Pimper ring main
- The drainage pipe is free of kinks
- The beer tap is open
- The sparkler has been removed from the tap
- The gas and assist pump are turned off

PROGRAMME OPTION

Default Clean (10 mins)

One Line Only (7½ mins)

Extended Clean (25 mins)

SELECTION:

Multi tap (One Product)

Single tap (Inc Super Clean*)

NB: Super Clean* does NOT increase programme time. It injects extra chemical and can be used with Multi Tap or Extended programmes

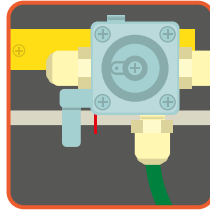
Our customers may obtain **PIPELINE AUTO** beer line cleaning fluid from us at a preferential price.

You can order via our website

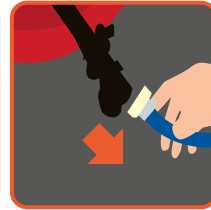
www.beerpiper.co.uk or by calling us on
FREEPHONE 0300 303 2709



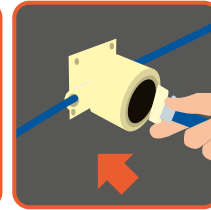
PREP IN THE CELLAR



TURN OFF Gas

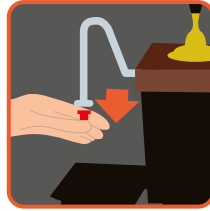


REMOVE coupling and any filter washer



CONNECT coupling to BP Ringmain using plain washer

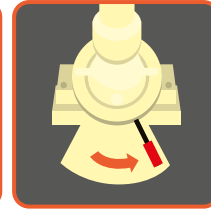
AT THE BAR



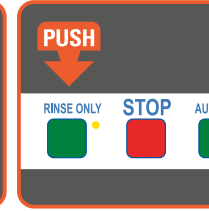
REMOVE sparkler if fitted



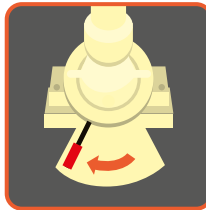
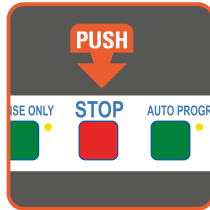
CONNECT Waste Pipe



OPEN Check Valve to 'Clean'

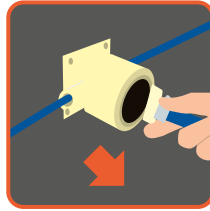


PRESS RINSE ONLY and wait at least 1 minute

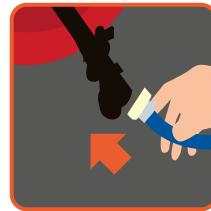


CLOSE Check Valve to 'Normal'

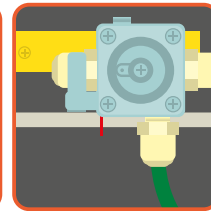
BACK IN THE CELLAR



DISCONNECT from BP Ringmain, store plain washer



RECONNECT coupling with filter washer

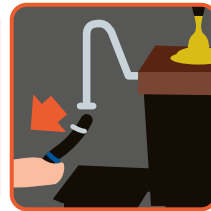


TURN ON Gas

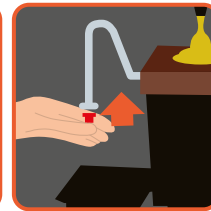
FINISHING UP AT THE BAR



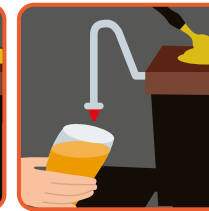
OPEN Tap until beer appears



DISCONNECT Waste Pipe



REPLACE sparkler



Serve beer

CAUTION!! ALWAYS WEAR PROTECTIVE GLOVES AND GOGGLES WHEN HANDLING BEER LINE CLEANING FLUID



KEG LINE CLEANING OPERATING INSTRUCTIONS

In the event of a blocked line signal check that:

- The coupling is connected to the Beer Pimper ring main
- The drainage pipe is free of kinks
- The beer tap is open
- The sparkler has been removed from the tap
- The gas and assist pump are turned off

PROGRAMME OPTION

Default Clean (10 mins)

One Line Only (7½ mins)

Extended Clean (25 mins)

SELECTION:

Multi tap (One Product)

Single tap (Inc Super Clean*)

NB: Super Clean* does NOT increase programme time. It injects extra chemical and can be used with Multi Tap or Extended programmes

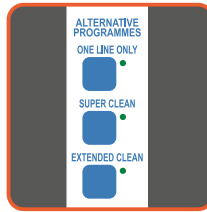
Our customers may obtain **PIPELINE AUTO** beer line cleaning fluid from us at a preferential price.

You can order via our website

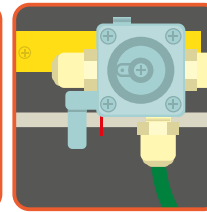
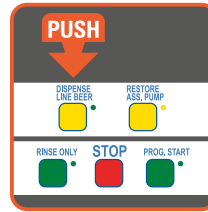
www.beerpimper.co.uk or by calling us on **FREEPHONE 0300 303 2709**



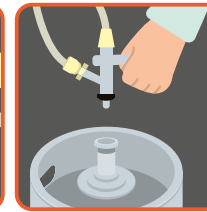
PREP IN THE CELLAR



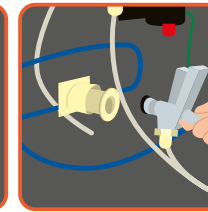
SELECT the cleaning programme required



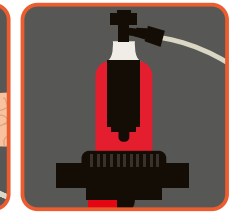
TURN OFF Gas



DISCONNECT Keg DE-GAS



CONNECT to BP Ringmain

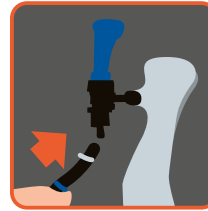


Ensure that the Fob is full

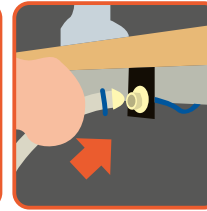
AT THE BAR



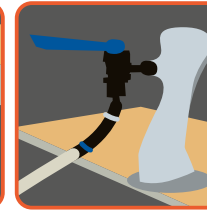
Sell line beer



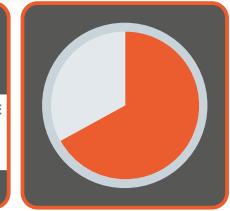
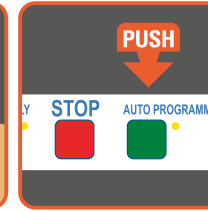
CONNECT Waste to Tap



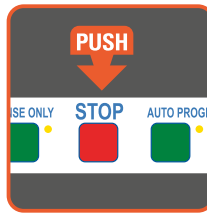
PLUG-IN Waste



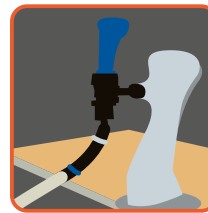
OPEN Tap



Line Clean In Progress

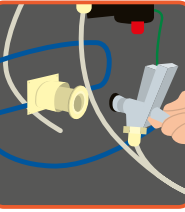
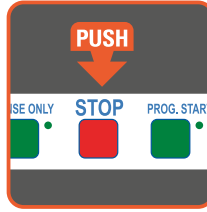


After the beep

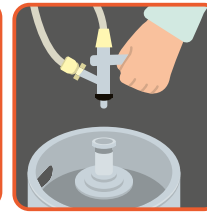


CLOSE Tap

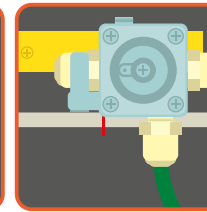
BACK IN THE CELLAR



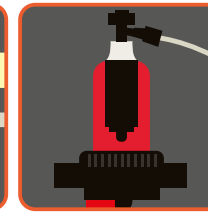
DISCONNECT from BP Ringmain



CONNECT Keg



TURN ON Gas

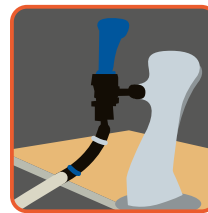


FILL Fob with beer

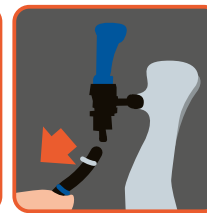
FINISHING UP AT THE BAR



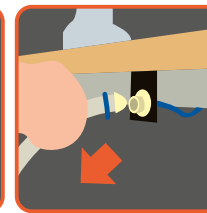
OPEN Tap until beer appears



CLOSE Tap



DISCONNECT Waste from Tap



UNPLUG Waste and rinse pipe



Serve beer

CAUTION!! ALWAYS WEAR PROTECTIVE GLOVES AND GOGGLES WHEN HANDLING BEER LINE CLEANING FLUID